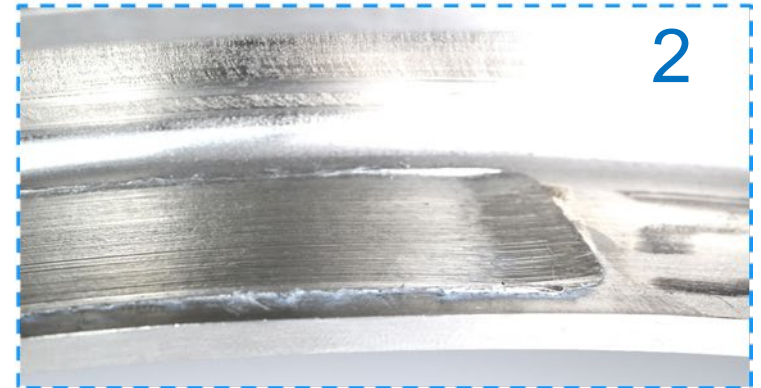
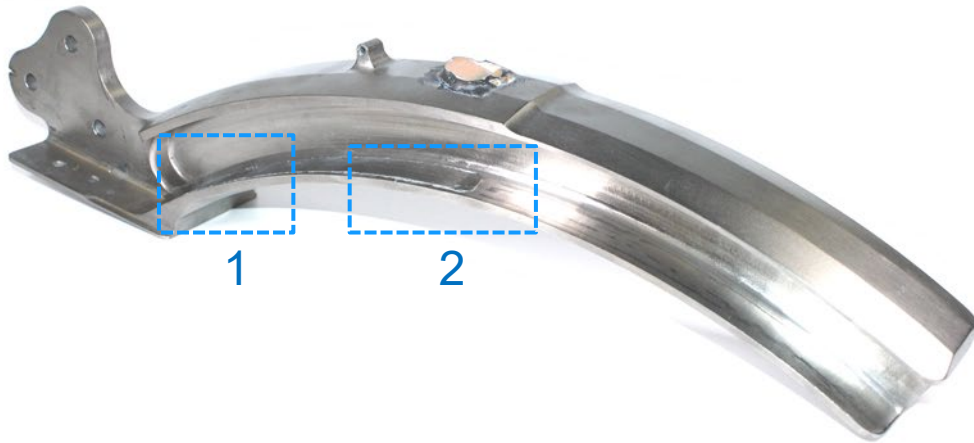


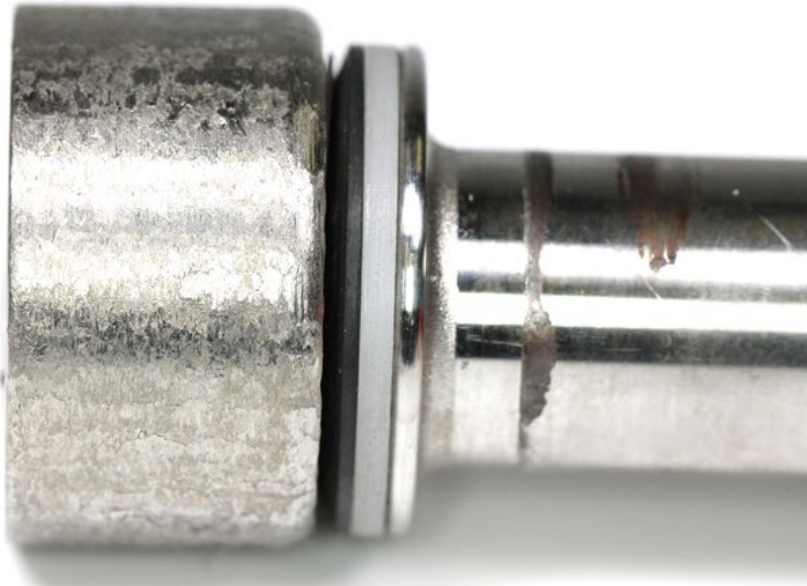
Long-Term Test Rig (Baseline Track)

- Current production hardware (Annealed 6Al-4V Titanium Track)
- Test stopped after **600** test hours, wear limits reached
 - 0.8 mm wear depth, heavy scarring



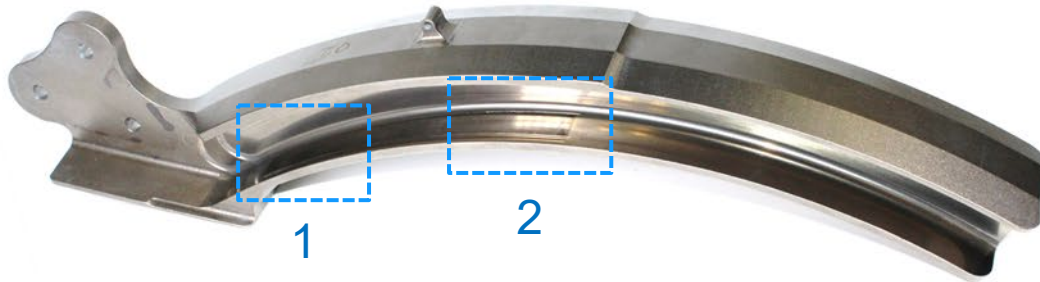
Long-Term Test Rig (Baseline)

- Track roller bearing mated with Annealed Track (600 Hours)
- Heavy distress, adhesive wear (titanium pick-up)



Long-Term Test Rig (TDH Track)

- TDH-treated test track
- Test successfully completed full **6,000** hours
 - Slight surface roughening in one location, no measurable wear to running surfaces



Long-Term Test Rig (TDH Track Test)

- Track roller bearing mated against TDH-treated Track (6000 Hours)
- OD burnishing, no measurable wear

